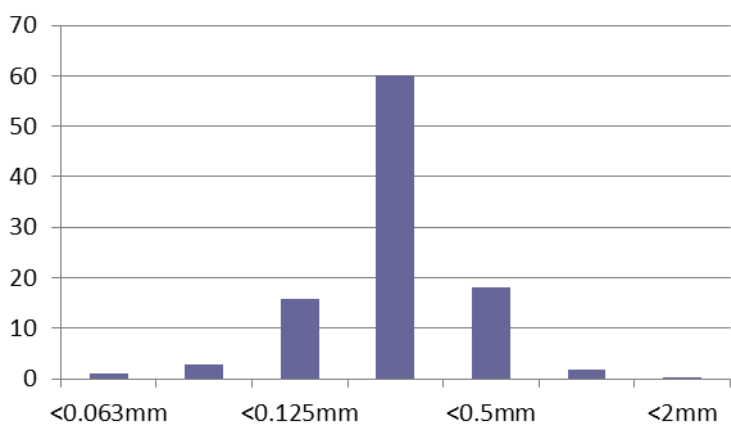


Material: ST01 Washed Sports Sand
Source: Bourne Amenity Ltd
Date: 19/07/2017
Tested Against: USGA Guidelines
Tested By: STRI (Report ID A16088/1)

Parameter	Guide	Range		Result	Compliance
Texture:					
Stones and Gravel	>3.4mm	0		0.0	Yes
Fine Gravel	>2.0mm	≤ 3	≤ 10	0.3	Yes
Very Coarse Sand	2.0 - 1.0mm			1.9	
Coarse Sand	1.0 - 0.5mm	≥ 60		18.2	Yes
Medium Sand	0.5 - 0.25mm			60.0	
Fine Sand	0.25 - 0.15mm	≤ 20		15.7	Yes
Very Fine Sand	0.15 - 0.053mm	≤ 5	≤ 10	2.8	Yes
Silt	0.053 - 0.002mm	≤ 5		0.7	
Clay	<0.002mm	≤ 3		0.4	

Organic Matter (LOI)	% w/w	0.0 - 1.5	0.0	Yes
Saturated Hydraulic Conductivity	mm/hr	≥ 150	753	Yes
Total Porosity	%	35 - 55	39.6	Yes
Air-filled Porosity at (30cm) Tension	%	15 - 30	23.7	Yes
Capillary Porosity at (30cm) Tension	%	15 - 25	16.0	Yes
Bulk Density	g/cc	n/a	1.60	--
Particle Density	g/cc	n/a	2.64	--

% Retained (Microns)



Particle Size % Passing (Microns)

