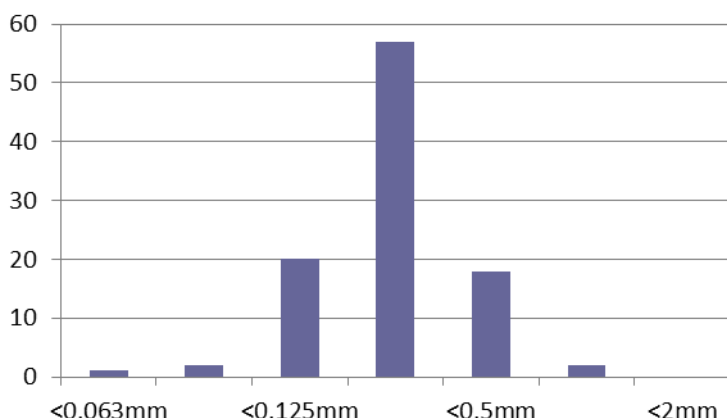


Material: Washed RH28 Sand
Source: Bourne Amenity Ltd
Date: 11/10/2017
Tested Against: USGA Guidelines
Tested By: Tim O'Hare Associates (TOHA/17/73321/2/SS)

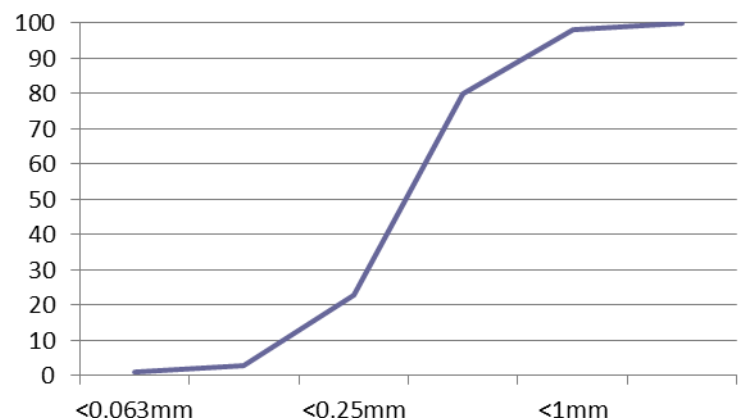
| Parameter | Guide | Range | | Result | Compliance |
|-------------------|-----------------|-------|------|--------|------------|
| Texture: | | | | | |
| Stones and Gravel | >3.4mm | 0 | | 0 | Yes |
| Fine Gravel | >2.0mm | ≤ 3 | ≤ 10 | 0 | Yes |
| Very Coarse Sand | 2.0 - 1.0mm | | | 2 | |
| Coarse Sand | 1.0 - 0.5mm | ≥ 60 | | 20 | Yes |
| Medium Sand | 0.5 - 0.25mm | | | 57 | |
| Fine Sand | 0.25 - 0.15mm | ≤ 20 | | 18 | Yes |
| Very Fine Sand | 0.15 - 0.053mm | ≤ 5 | ≤ 10 | 2 | Yes |
| Silt | 0.053 - 0.002mm | ≤ 5 | | 0 | |
| Clay | <0.002mm | ≤ 3 | | 1 | |

| | | | | |
|---|---------------------|-----------|------|-----|
| PH | 1:2.5 water extract | 5.0 - 8.5 | 7.3 | Yes |
| Organic Matter (LOI) | % w/w | <1.5 | <0.1 | Yes |
| Saturated Hydraulic Conductivity | mm/hr | ≥ 150 | 1045 | Yes |
| Calcium Carbonate | % | -- | <1.0 | -- |
| Electrical Conductivity (1:2.5 water extract) | μS/cm | -- | 64 | -- |
| Electrical Conductivity (1:2 CaSO ₄ extract) | μS/cm | -- | 2018 | -- |

% Retained (Microns)



Particle Size % Passing (Microns)



Bourne Amenity, The Wharf, Rye Road, Newenden, Kent TN18 5QG

01797 252299 • enquiries@bourneamenity.co.uk

www.bourneamenity.co.uk

VAT No: 863 1196 22 • Registered in England No: 3453821