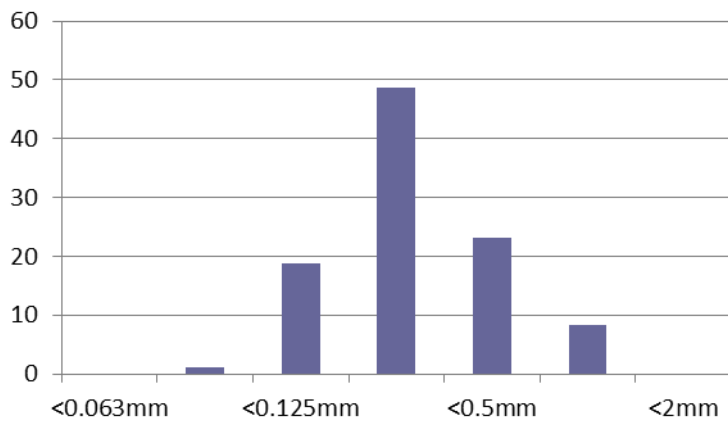


Material: Washed P205 Sports Sand
Source: Bourne Amenity Ltd
Date: 11/10/2016
Tested Against: USGA Guidelines
Tested By: In House / STRI (Report ID A15824/1)

Parameter	Guide	Range		Result	Compliance
Texture:					
Stones and Gravel	>3.4mm	0		0	Yes
Fine Gravel	>2.0mm	≤ 3	≤ 10	0	Yes
Very Coarse Sand	2.0 - 1.0mm			8.4	
Coarse Sand	1.0 - 0.5mm	≥ 60		23.1	Yes
Medium Sand	0.5 - 0.25mm			48.6	
Fine Sand	0.25 - 0.15mm	≤ 20		18.7	Yes
Very Fine Sand	0.15 - 0.053mm	≤ 5	≤ 10	1.2	Yes
Silt	0.053 - 0.002mm	≤ 5		0	
Clay	<0.002mm	≤ 3		0	

PH		5.0 - 8.5	6.7	Yes
Saturated Hydraulic Conductivity	mm/hr	≥ 150	576	Yes
Bulk Density	g/cc	n/a	1.6	--

% Retained (Microns)



Particle Size % Passing (Microns)

