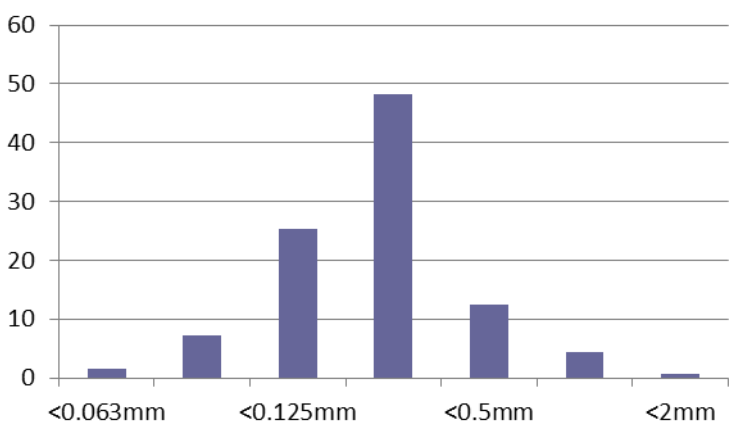


Material: Grade E Sand
Source: Bourne Amenity Ltd
Date: 02/02/2018
Tested Against: UK Golf Guidelines
Tested By: STRI (Report ID A16547/1)

Parameter	Guide	Range		Result	Compliance
Texture:					
Stones and Gravel	>3.4mm	0		0.0	Yes
Fine Gravel	>2.0mm	≤ 3	≤ 10	0.7	Yes
Very Coarse Sand	2.0 - 1.0mm			4.4	
Coarse Sand	1.0 - 0.5mm	≥ 60		12.5	Yes
Medium Sand	0.5 - 0.25mm			48.3	
Fine Sand	0.25 - 0.15mm	≤ 20		25.4	No
Very Fine Sand	0.15 - 0.053mm	≤ 5	≤ 10	7.2	Yes
Silt	0.053 - 0.002mm	≤ 5		0.7	
Clay	<0.002mm	≤ 3		0.8	

Organic Matter (LOI)	% w/w	<2.0	0.06	Yes
Saturated Hydraulic Conductivity	mm/hr	≥ 150	189	Yes
Total Porosity	%	≥ 35	38.0	Yes
Air-filled Porosity at (30cm) Tension	%	≥ 14	11.5	No
Capillary Porosity at (30cm) Tension	%	≥ 17	26.5	Yes
Bulk Density	g/cc	n/a	1.64	--
Particle Density	g/cc	n/a	2.64	--

% Retained (Microns)



Particle Size % Passing (Microns)

