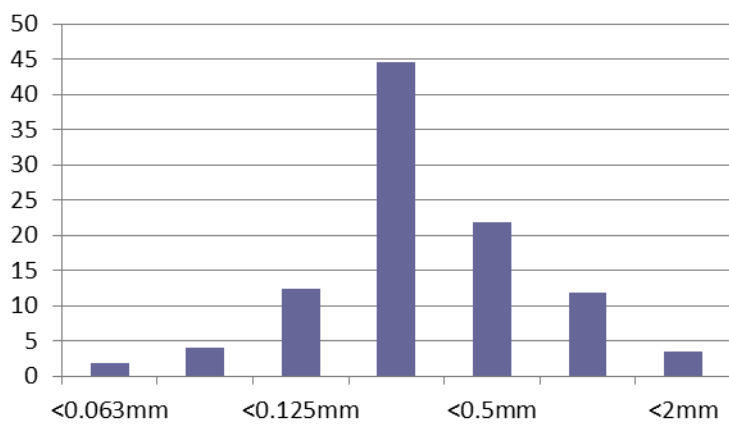


Material: Washed Grade D Sand
Source: Bourne Amenity Ltd
Date: 30/01/2019
Tested Against: USGA Guidelines
Tested By: STRI (Report ID A17386/1)

Parameter	Guide	Range		Result	Compliance
Texture:					
Stones and Gravel	>3.4mm	0		0.5	No
Fine Gravel	>2.0mm	≤ 3	≤ 10	3.0	No
Very Coarse Sand	2.0 - 1.0mm			11.9	
Coarse Sand	1.0 - 0.5mm	≥ 60		21.8	Yes
Medium Sand	0.5 - 0.25mm				
Fine Sand	0.25 - 0.15mm	≤ 20		12.4	Yes
Very Fine Sand	0.15 - 0.053mm	≤ 5	≤ 10	4.0	Yes
Silt	0.053 - 0.002mm	≤ 5		1.0	
Clay	<0.002mm	≤ 3		0.8	

Organic Matter (LOI)	% w/w	0.0 - 3.5	0.11	Yes
Ph		5.0 - 8.5	6.4	Yes
Saturated Hydraulic Conductivity	mm/hr	≥ 150	230	Yes
Total Porosity	%	35 - 55	37.1	Yes
Air-filled Porosity at (30cm) Tension	%	15 - 30	18.5	Yes
Capillary Porosity at (30cm) Tension	%	15 - 25	18.6	Yes
Bulk Density	g/cc	n/a	1.68	--
Particle Density	g/cc	n/a	2.67	--

% Retained (Microns)



Particle Size % Passing (Microns)

