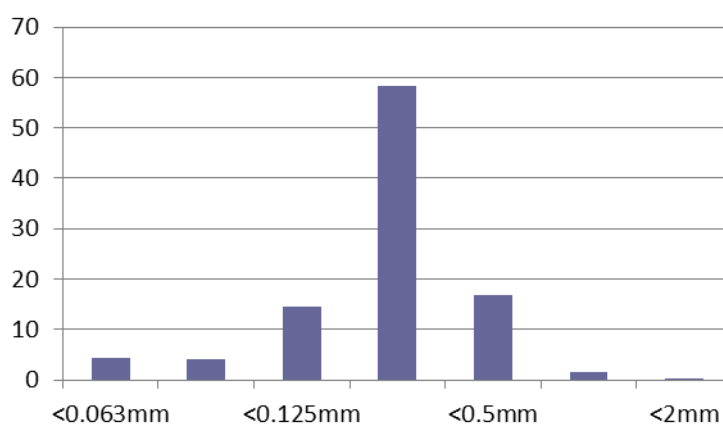


**Material:** 5mm Screened 70/30 SS01 Sand/Soil Rootzone  
**Source:** Bourne Amenity Ltd  
**Date:** 21/06/2017  
**Tested Against:** USGA Guidelines  
**Tested By:** STRI (Report ID A15992/2)

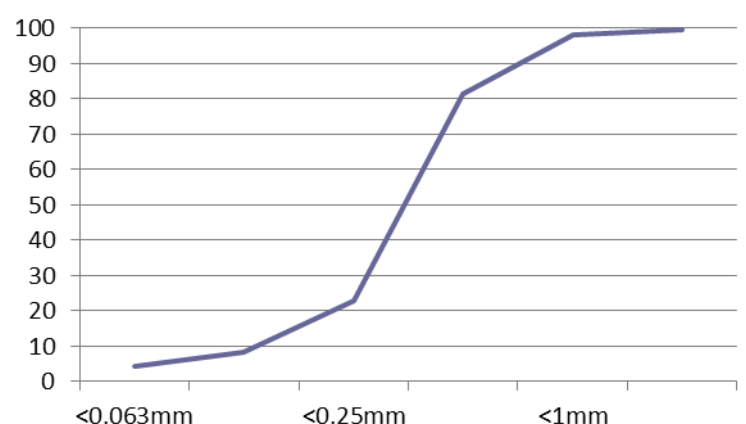
Parameter	Guide	Range		Result	Compliance
<b>Texture:</b>					
Stones and Gravel	>3.4mm	0		0.0	Yes
Fine Gravel	>2.0mm	≤ 3	≤ 10	0.3	Yes
Very Coarse Sand	2.0 - 1.0mm			1.5	
Coarse Sand	1.0 - 0.5mm	≥ 60		16.8	Yes
Medium Sand	0.5 - 0.25mm				
Fine Sand	0.25 - 0.15mm	≤ 20		14.5	Yes
Very Fine Sand	0.15 - 0.053mm	≤ 5	≤ 10	4.2	Yes
Silt	0.053 - 0.002mm	≤ 5		2.5	
Clay	<0.002mm	≤ 3		1.8	

<b>Organic Matter (LOI)</b>	% w/w	0.5 - 3.5	0.51	Yes
<b>Ph</b>		5.0 - 8.5	6.3	Yes
<b>Saturated Hydraulic Conductivity</b>	mm/hr	≥ 150	330	Yes
<b>Total Porosity</b>	%	35 - 55	39.9	Yes
<b>Air-filled Porosity at (30cm) Tension</b>	%	15 - 30	22.1	Yes
<b>Capillary Porosity at (30cm) Tension</b>	%	15 - 25	17.8	Yes
<b>Bulk Density</b>	g/cc	n/a	1.60	--
<b>Particle Density</b>	g/cc	n/a	2.66	--

**% Retained (Microns)**



**Particle Size % Passing (Microns)**



**Bourne Amenity, The Wharf, Rye Road, Newenden, Kent TN18 5QG**

01797 252299 • enquiries@bourneamenity.co.uk

www.bourneamenity.co.uk

VAT No: 863 1196 22 • Registered in England No: 3453821